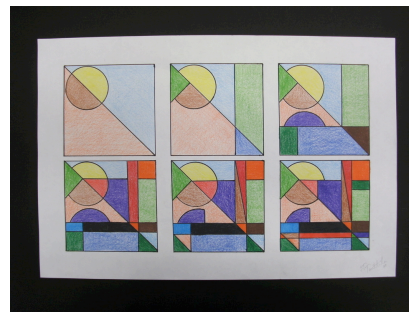
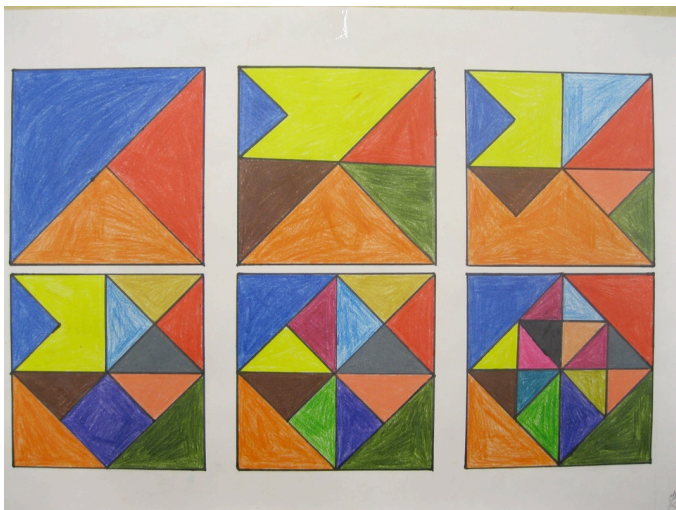


## Line Variation

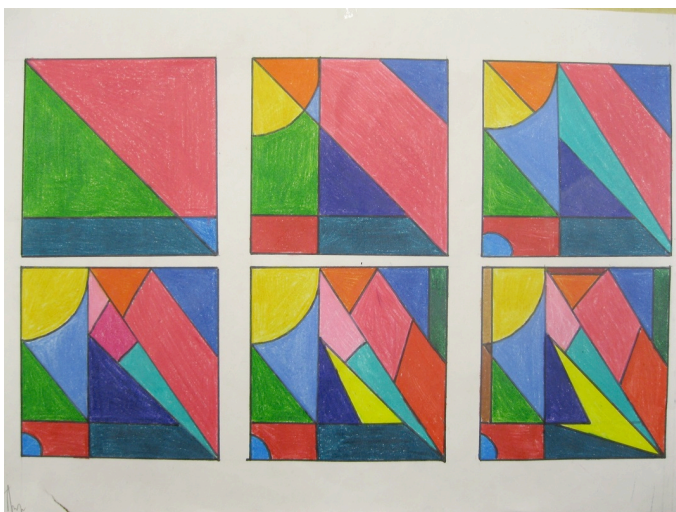


This assignment focuses on variation of design shown in a sequential fashion. You will need to use math skills to solve the first problem needed to complete this project accurately: Measuring out the 6 squares.

You will be given a 12x18 piece of paper. On this paper, you must have 6 evenly sized squares and they must be evenly spaced across the page. The borders around the boxes and in between the boxes must be even according to the row they are in and according to the overall composition. Look at the examples for an idea of what this looks like.

After you have your paper gridded out into this starting point, you can begin the placement of the lines inside each square. There is a formulaic method of applying these squares.

1. You will work starting in the upper left square and moving to the right, repeating this in the next row (moving along the squares as if you were reading a book)
2. In the first square, start with 2 lines. One of these "lines" can be a circle if you wish (if you use a circle, make sure you are tracing something to keep it even and precise)
3. In the next square, copy EXACTLY the same two lines you started with in the first square. Use a ruler to ensure exact placement. In this same square, you must now add 3 NEW lines which must overlap in some way, either with each other or the previous 2 lines. After you have added the 3 new lines, you must erase one line SEGMENT. You cannot erase an entire line, just a segment from where they are overlapped.
4. After you have erased the line segment, you will copy exactly what you have in the second square into the third square. Use a ruler for exact placement. Repeat the directions above, adding 3 new lines and subtracting 1 line segment. Continue this until the 6th box.
5. The final part of this project is to color it.



How will you be graded?

Use of class time.....0 1 2

Evenly spaced 6 boxes.....0 1 2 3  
(boxes are the same size, there is an even border around edges, etc.)

Proper use of line application....0 1 2 3  
(add 3, subtract 1 segment)

Neatness.....0 1 2  
(paper is free from smudges, tears, eraser marks, there is evidence you cared to make the presentation nice, coloring is done purposefully and with care, etc.)