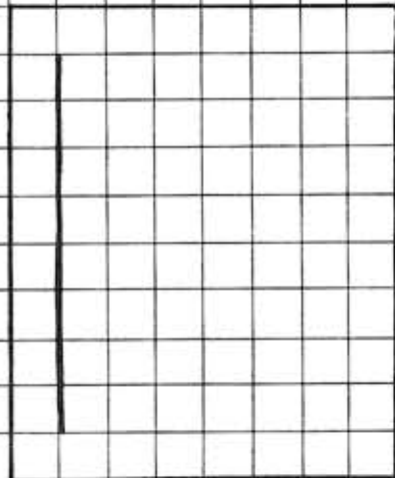
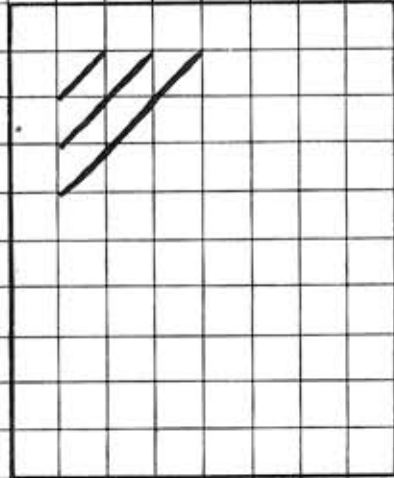


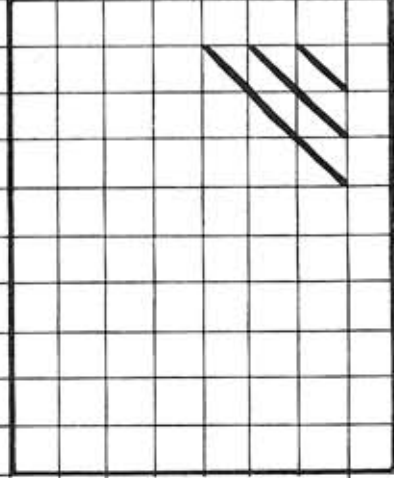
Add eight horizontal lines
 $\frac{1}{4}$ in. apart.



Add six vertical lines
 $\frac{1}{4}$ in. apart.

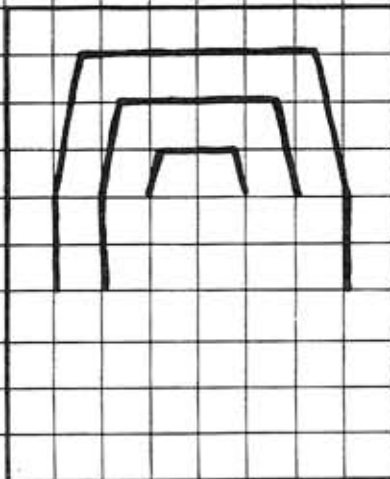


Add 45° lines.

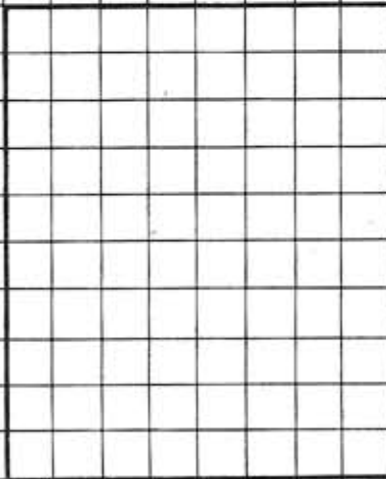


Add 45° lines.

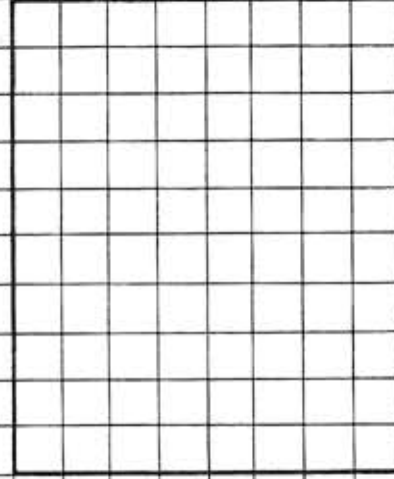
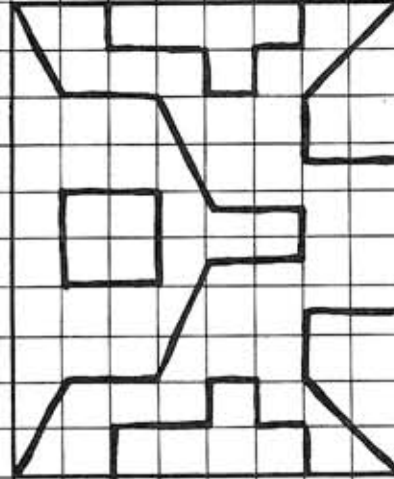
Complete the design.



Duplicate the finished
design at the left.



Duplicate the design shown
at the left.



Title: *Freehand Sketching*

NAME OF SCHOOL _____

Drawn by: _____

Date: _____